

## **Assessment of Management Effectiveness and Law Enforcement in Forest Sanctuaries in Armenia**

*Draft Report*



**National experts:**

**Armen Gevorgyan**

**Pavel Abovyan**

**May 2010**

## **Executive Summary**

Improvement of the management system of natural resources, existence of environmental legislation enforcement mechanisms and development of the system of specially protected nature areas has particular significance for the conservation of biological diversity and ecosystems of Armenia. Assessment of various factors (legal, institutional, social-economic, natural, etc.) affecting the ecosystems is one of the efficient ways of overcoming these problems. It is the methodological base for planning and implementation of further activities. Particularly, the World Commission on Protected Areas (WCPA) has together with World Bank and World Wide Fund for Nature developed a framework aimed at the development of the management effectiveness assessment system (Management Effectiveness Tracking Tool, METT):

At present the regional program “Improving Forest Law Enforcement and Governance in the European Neighbourhood Policy East Countries and Russia – ENPI FLEG Program” is implemented in Armenia aimed at putting in place improved forest governance arrangements through effective implementation of the main priorities set out in the St. Petersburg Ministerial Declaration and Indicative Plan of Actions for the Europe and North Asia Forest Law Enforcement and Governance (ENA-FLEG) process. Implementation of the Program is led by the World Bank, working in partnership with the International Union for Conservation of Nature and Natural Resources (IUCN) and the World Wide Fund for Nature (WWF) and in close coordination with Government and non-governmental stakeholders of the participating countries. Action plan and timetable of activities were developed in the framework of the project. The activity “Assessment of Management Effectiveness and Law Enforcement in the Forest Sanctuaries in Armenia” was carried out by WWF Armenia during March-May, 2010. The assignment was aimed at the assessment of management and law enforcement effectiveness in two forest Sanctuaries in the structure of “Hayantar” SNCO. The assignment report presents the analysis of management and law enforcement issues, criteria for the selection of Sanctuaries, existing problems, description of results and proposals on improvement management and law enforcement.

**Abbreviations**

<b>WB</b>	World Bank
<b>AFSMLEE</b>	Assessment of Forest Sanctuary Management and Law Enforcement Effectiveness
<b>IUCN</b>	International Union for Conservation of Nature
<b>WWF</b>	World Wide Fund for Nature
<b>FLEG</b>	Forest Law Enforcement and Governance
<b>MoNP RA</b>	Ministry of Nature Protection of the Republic of Armenia
<b>MoA RA</b>	Ministry of Agriculture of the Republic of Armenia
<b>SNCO</b>	State Non-Commercial Organisation
<b>SPNA</b>	Specially Protected Nature Area
<b>BMA</b>	Bioresources Management Agency
<b>METT</b>	Management Effectiveness Tracking Tool

## Table of Contents

<b>EXECUTIVE SUMMARY</b> .....	<b>2</b>
<b>ABBREVIATIONS</b> .....	<b>3</b>
<b>TABLE OF CONTENTS</b> .....	<b>4</b>
<b>CHAPTER 1</b> .....	<b>6</b>
1.1 ENPI-FLEG Program - Background Information.....	6
1.2 Description of the Activity on Assessment of Forest Sanctuary Management and Law Enforcement Effectiveness (AFSMLEE).....	6
1.3 Tools of SPNA Management Effectiveness Assessment.....	7
<b>CHAPTER 2</b> .....	<b>8</b>
2.1. The System of Specially Protected Nature Areas of the Republic of Armenia .....	8
2.2. Management of SPNAs.....	8
2.3. Status of SPNAs.....	<b>Error! Bookmark not defined.</b>
2.4. SPNAs in the Field of Forestry .....	10
<b>CHAPTER 3</b> .....	<b>12</b>
3.1. Peculiarities of Sanctuaries .....	12
3.2. Legislative Problems .....	13
3.3. Institutional Problems .....	13
<b>CHAPTER 4</b> .....	<b>155</b>
4.1. Criteria Applied for the Selection of Sanctuaries .....	155
4.2. Description of Sanctuaries (Map 1) .....	155
4.2.1. “Ijevan” State Sanctuary .....	155
4.2.2. “Arjatkhlendi Hazelnut” State Sanctuary .....	155
4.2.3. “Gyulagarak Pine” State Sanctuary.....	166
4.2.4. “Zikatar” State Sanctuary .....	166
4.3. The Results of the Assessment of Sanctuaries.....	177
4.3.1. “Ijevan” and “Arjatkhlendi Hazelnut” State Sanctuaries.....	17
4.3.2. “Gyulagarak Pine” State Sanctuary.....	188
4.3.3. “Zikatar” State Sanctuary .....	188

---

4.4. Proposals on Improvement of Management and Law Enforcement .....	211
<b>ANNEX 1</b> .....	<b>22</b>
<b>ANNEX 2</b> .....	<b>233</b>
<b>ANNEX 3</b> .....	<b>266</b>
<b>ANNEX 4</b> .....	<b>444</b>
<b>ANNEX 5</b> .....	<b>488</b>
<b>MAPS</b> .....	<b>49</b>
Map 1. Boundaries of "Ijevan" and "Arjatkhlendi Hazelnut" State Sanctuaries .....	49
Map 2. Boundaries of "Gyulagarak Pine" State Sanctuary .....	50
<b>BIBLIOGRAPHY</b> .....	<b>51</b>
<b>PHOTOS</b> .....	<b>52</b>

**TABLES**

Table 1. Management system of SPNAs of Armenia .....	9
Table 2. Main Institutions in the Field of Forest Management .....	11
Table 3. Current State of Management and Law Enforcement in Sanctuaries (summary).....	19
Table 4. Proposed Measures for Improvement of Management and Law Enforcement in Sanctuaries .	21

## CHAPTER 1

### 1.1 ENPI-FLEG Program - Background Information

The ENPI-FLEG Program “Improving Forest Law Enforcement and Governance in the European Neighbourhood Policy East Countries and Russia” is being implemented within Europe and North Asia Forest Law Enforcement and Governance (ENA-FLEG) process (aimed at the implementation of the main priorities set out in the St. Petersburg Ministerial Declaration and Indicative Plan of Actions).

The program is implemented in Armenia, Azerbaijan, Belarus, Georgia, Moldova, Russia and Ukraine, from February 2008 till June 2011. The program is focusing on the active involvement of state, civil and private sectors in the improvement of forest management and law enforcement issues.

Program activities cover development of national action plans, capacity building and training, awareness raising, support to regional and sub regional collaboration, and support for the implementation of the priority actions of FLEG. In the frame of the program analytical works are implemented on illegal forest activities, their prevention, monitoring and related developments. Implementation of the Program is led by the World Bank (WB) working in partnership with the International Union for Conservation of Nature and Natural Resources (IUCN) and the World Wide Fund for Nature (WWF).

Activity plan and timetable were developed by the abovementioned organizations for the activities to be carried out in Armenia. The activity on assessment of forest sanctuary management and law enforcement effectiveness is the activity foreseen in the action plan to be implemented by WWF Armenia.

### 1.2 Description of the Activity on Assessment of Forest Sanctuary Management and Law Enforcement Effectiveness (AFSMLEE)

**AFSMLEE** was implemented in the framework of ENPI-FLEG regional project by WWF Armenia during March-May, 2010 by national experts Armen Gevorgyan and Pavel Abovyan. It is aimed at the assessment of management effectiveness and law enforcement issues in two forest sanctuaries in the structure of “Hayantar” SNCO.

The main objectives of the assignment were as follows:

- Selection of two pilot sanctuaries in the structure of “Hayantar” SNCO of the MoA RA for the assessment of their management effectiveness;
- Apply Management Effectiveness Tracking Tool (METT) and carry out interviews with the staffs of the sanctuaries for the assessment of management effectiveness and management needs;
- Develop questionnaires and carry out interviews with the staffs of the sanctuaries for the assessment of law enforcement and related needs;
- Draw proposals on improvement of management and law enforcement in selected pilot sanctuaries.

The proposals developed on the basis of the assessments and analyses are aimed at capacity building, as well as planning and implementation of activities towards management improvement.

### **1.3 Tools of SPNA Management Effectiveness Assessment**

The World Commission on Protected Areas (WCPA) has developed a framework for the assessment of SPNA effectiveness for both individual SPNAs and for the whole SPNA system.

In 1998 the World Bank (WB) and the World Wide Fund for Nature (WWF) formed an alliance for Forest Conservation and Sustainable Use, which developed the Management Effectiveness Tracking Tool – METT for the reporting on SPNA management effectiveness within WB and WWF projects.

METT is based on the WWF methodology of Rapid Assessment and Prioritization of Protected Areas Management (RAPPAM). It is used to identify SPNA management problems, strengths and weaknesses, threats and management effectiveness.

METT is an independent rapid assessment method that provides a quick overview of the management effectiveness. It is to be filled in by the protected area management personnel or other relevant individuals. The Tracking Tool has two main sections: datasheets and assessment form. Data sheet records basic information for the assessment (site area, name, size and location, individuals involved in the assessment) and identifies SPNA threats and their impacts.

In the assessment form a series of alternative answers are provided against each question to help make the right choice of the score. In addition, there are supplementary questions and remarks which elaborate on key themes in the previous questions or provide additional information (documents mentioned, monitoring results, trainings, assessments, etc.).

In addition to METT (Annex 3) an assessment form for the assessment of the law enforcement effectiveness in sanctuaries was developed and applied within AFSMLEE (Annex 4). Both forms were filled by the staffs of sanctuaries based on the meetings with them (Annex 5). Data received from “Hayantar” SNCO, State Forest Monitoring Centre, State Environmental Inspection of MoNP and “Forest Research Experimental Centre” SNCO was also used for the assessment.

## CHAPTER 2

### 2.1. The System of Specially Protected Nature Areas of the Republic of Armenia

The strategic goal of the SPNA management in Armenia is the protection of natural complexes, landscape and biological diversity. The total area covered by SPNAs is approximately 380 thousand ha. They are in the structure of the MoNP, MoA and the Ministry of Economy. The foundation of the SPNA system of Armenia commenced in 1958. At present it includes:

**3 State Reserves** – “Khosrov Forest”, “Shikahogh” and “Erebuni” (Annex 1). Human activities in State Reserves are limited to scientific researches, inventory and monitoring, as well as limited tourism, organisation of educational and practical exercises for educational institutions.

**4 National Parks** - “Sevan”, “Dilijan”, “Arpi Lake” and “Arevik” (Annex 1). National Parks include reserve, economic and recreational zones with respective management regimes.

**27 Sanctuaries** - (Annex 2). Any activity contradicting Sanctuary’s objective is prohibited or restricted on the territory of sanctuaries.

**230 Natural Monuments** - The list of 230 nature monuments was approved by the RA Governmental Decree N 967-N, dated 14.08.2008.

According to the RA Law on SPNAs arboretums are not classified as SPNA category, however they are subordinated to the MoNP. There are 5 arboretums in Armenia - “Vanadzor”, “Stepanavan pine”, “Ijevan”, “Berd Soran” and “Jrvezh” forest grove.

### 2.2. Management of SPNAs

Articles 8-11 of the Chapter 2 of the RA Law on SPNAs defines the authorities of the RA Government, state authorized management body, regional authorised bodies of state management and local self-governing bodies in the sphere of SPNAs.

**RA Government** - The authorities of the RA Government in the field of establishment, designation, management, conservation and use of SPNAs include development of policy and approval of strategy, approval of state programs in the sphere of conservation and use of SPNAs, approval and revision of SPNA management plans of international and republican significance, approval of SPNA charters, approval of orders on running state cadastre, monitoring and use of SPNAs and others.

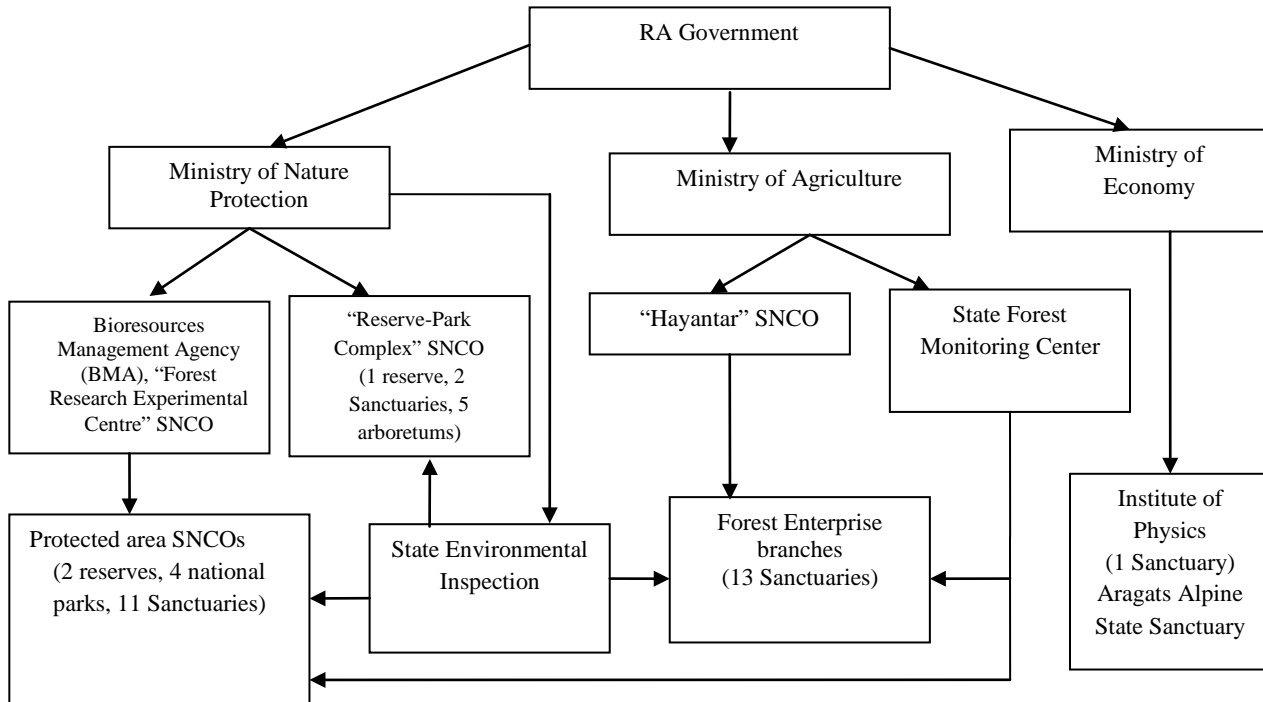
**State authorised management body**- The authorities of the state authorised management body (MoNP RA) in the field of establishment, designation, management, conservation and use of SPNAs include development of state policy and strategy of the conservation and use of SPNAs, management of SPNAs of international and republican significance, as well as approval of management plans for SPNAs of local significance, development of SPNA charters and others.

The authorities in the sphere of SPNA management vested with the MoNP RA are implemented through structural and separated subdivisions of the Ministry (Bioresources Management Agency (BMA), State Environmental Inspection (SEI), Department of Environment Protection, etc.), as well as through other SNCOs in the structure of the Ministry.

**Regional bodies of state management** - Regional bodies of state management take part in the development of state programs and management plans for SPNAs, assist conservation activities etc. They are represented by respective divisions of regional (Marz) administration (Environmental departments).

**Local self-governing bodies** - The authorities of local self-governing bodies include participation in development of state programs and management plans for SPNAs of international and republican significance located within administrative boundaries of communities and provision of SPNA conservation regime. Alongside with the mentioned, local self-governing bodies are vested with authorities to submit proposals to the authorised state management body on the establishment of SPNAs within the administrative boundaries of communities, as well as preparation of their management plans, organisation of management, conservation, use and monitoring.

**Table 1. Management system of SPNAs of Armenia**



### 2.3. Status of SPNAs

According to the Law of the Republic of Armenia on Specially Protected Nature Areas (2006) special protection regime is defined for SPNAs, which is mainly stipulated by significance and peculiarities of the status of these areas. The SPNAs are classified as follows:

- a) by significance - SPNAs of international, republican and local significance
- b) by category- State Reserves, National Parks, State Sanctuaries and Natural Monuments

SPNAs of international and republican significance are under state ownership. Lands belonging to other owners than State can be included in the recreational and economic zones of National Parks in order to provide their integrity and protection regime.

State Reserves are areas of international and (or) republican significance having unique nature protection and aesthetical features of scientific, educational and historical-cultural value, where the habitat evolution processes are ongoing without human intervention. National Parks are areas of international and (or) republican significance having nature protection, scientific, historical-cultural, aesthetical and recreational values, that can be used for scientific, educational, recreational, cultural and

economic purposes thanks to combination of natural landscape and cultural values and have a special protection regime. Natural Monuments are natural objects having special scientific, historical-cultural and aesthetical value. State Sanctuaries are areas with scientific, educational, historical-cultural and economic value, which ensure the protection and natural reproduction of ecosystems and their components.

SPNAs of different categories can be included in the ecological network through ecological corridors and buffer zones.

The status of SPNAs is defined according to the requirements of the RA Law on Specially Protected Nature Areas, and their objectives and regime peculiarities are set forth in the SPNA charters approved by the RA Government Decrees. The fulfilment of the requirements defined by the Charters of SPNAs (the protection regime of Natural Monuments is defined by their passports) is ensured by State Non-Commercial Organisations (SNCO).

According to the RA Law on State Non-Commercial Organisations (2001) the SNCO is a non-profit non-commercial organisation with the status of legal person established with the purpose to implement activities in environmental and other non-commercial fields.

State Reserves (SNCO) in Armenia are non-commercial state organisations with the status of legal person that implement environmental, scientific and social-cultural activities. The protection of State Reserves is implemented by their protection services.

National Parks (SNCO) are non-commercial organisations with the status of legal person. They carry out environmental, scientific-research and scientific-cognitive (eco-educational) activities in compliance with the Constitution of RA, RA Civil Code, RA Laws on the State Non-Commercial Organisations and Specially Protected Nature Areas, their Charters and other legal acts.

State Sanctuaries do not have a status of legal person, and their objectives and regimes are defined by their Charters.

#### **2.4. SPNAs in the Field of Forestry**

Forests of Armenia are owned exclusively by state and managed through state institutions (MoA RA, MoNP, Table 2). RA Forest Code allows for the community and private ownership for newly established forests.

Since 2004 the management functions in the forestry field were transferred to the MoA, which implements those functions through the Department of Plant Breeding, Plant Protection and Forest Economy, “State Forest Monitoring Centre” and “Hayantar” SNCOs. The latter manages around 75% of forests on the territory of RA.

“Hayantar” SNCO has 21 regional branches (Forest Enterprises), which do not have a status of legal person. 13 forest Sanctuaries (Annex 2) are included in the structure of Forest Enterprises, their management does not have certain legal regime and does not differ from the management of forest enterprises with no status of legal person. There is no accurate data on the boundaries, biodiversity status, monitoring and use. The current state system of forest management and its institutions are in the process of reforms, which has resulted in decrease of illegal loggings and increase of forest rehabilitation volumes, however sustainable forest management is not yet secured.

Forest areas in the structure of the SPNAs (around 25%) are managed by the MoNP (National Parks, Reserves, Sanctuaries - Annexes 1, 2) and belong to the Ministry.

**Table 2. Main Institutions in the Field of Forest Management**

Institution	Functions	Notes
<b>RA Ministry of Agriculture</b>		
Department of Plant Breeding, Plant Protection and Forest Economy	Development of state policy in the sphere of forest conservation, reproduction and use, as well as development of legislation and strategy.	
“Hayantar” SNCO ( 21 Forest Enterprises)	Implementation of state policy in the sphere of forest conservation, reproduction and use, provision of conservation, protection, reproduction and effective use of forests	Forest SPNAs in the structure of “Hayantar” SNCO are not managed as SPNAs.
“State Forest Monitoring Centre” SNCO	Implementation of state monitoring of illegal loggings and state forest monitoring	The functions are not clearly defined (duplication of some functions of “Hayantar” SNCO, BMA and State Environmental Inspection).
<b>RA Ministry of Nature Protection</b>		
State Environmental Inspection	Control over the implementation of rules and requirements set forth in the environmental legislation.	Incomplete control over sanctuaries due to the inaccuracies in the Forest Code and Law on Environmental Inspection as well as absence of Sanctuary charters and by-laws.
Bioresources Management Agency	Provision of services for forest management policy, in particular safeguarding state inventory of forests, forest management planning activities.	
MoNP RA Environmental Protection Department	Development of state policy in the sphere of environment and biodiversity protection, reproduction and use, as well as development of legislation and strategy.	
MoNP RA, “Forest Research Experimental Centre” SNCO	Implementation of forest research, forest inventory and forest management planning activities	Preparation of forest management plans, scientific-research and training activities.

## CHAPTER 3

### 3.1. Peculiarities of Sanctuaries

State Sanctuaries have particular significance in the SPNA management system and forest sector of Armenia. Conservation of sanctuaries is aimed at the preservation of natural complexes and their valuable components, improvement and reproduction of flora and fauna, as well as provision of social-economic and ecological balance of areas (according to the state strategy and national action plan of SPNA development).

From territorial point of view the sanctuaries are relatively small (there are some exceptions) compared to SPNAs of other categories (National Parks, State Reserves), however they are compact with respect to the coverage of ecosystems and include various landscapes typical for the country and valuable forest areas. Nevertheless, sanctuaries (along with SPNAs of other categories) do not form ecological network (which is of fragmented character), as there are no ecological corridors in Armenia and the process of establishment of new SPNAs is not yet finished. Sanctuaries and other SPNAs connected to each other through ecological corridors are the spatial base for the planning of ecological network, which in its turn creates justified preconditions for the establishment of new SPNAs.

At present a number of forest sanctuaries are not regarded as priority environmental areas, there is no scientific justification and planning for their protection. Although sanctuaries have comparatively better opportunities for management improvement due to their small size, their management system is imperfect due to numerous uncertainties in the forestry sector and environmental legislation. The prerequisites for the establishment of some sanctuaries are no longer actual, there are many changes in the areas designated as SPNA at earlier stages, resulting in the need of revision of their boundaries and main protection objects. This has become more complicated in the last two decades due to massive processes of land allocation to private and state owners and land use, imperfect mechanisms of law enforcement and institutional system.

Most of the RA State Sanctuaries do not have scientifically justified and approved boundaries, the clarification of their boundaries and mapping is ongoing. The non-certainty of the boundaries of these areas brings about non-regulated use not consistent with their protection regimes (forest loggings, non-targeted use of areas, land occupation, grazing, poaching, etc.) and construction activities (animal farms, sanatoriums, mining, infrastructures, etc.). Large areas of sanctuaries are used for agricultural purposes or as state forest lands (with no status of SPNA).

There are many problems deriving from the absence of management plans, continuous non-regulated loggings, lack of reliable data on forest resources, massive and non-regulated forest use and other reasons, resulting in the decline of qualitative and quantitative features of forests. Illegal loggings continue due to various reasons of social-economic character, high demand for firewood, accessibility, needs of socially vulnerable layers of the population and low level of solvency. There is no sufficient data on acceptable quotes of forest biodiversity use, criteria for monitoring, possible impacts of climate change, change of forest cover and other researches to be used for effective management.

Gasification of forest adjacent communities has resulted in a considerable decrease of the volume of illegal forest use during recent years. However, due to the low level of solvency, timber is still the main and the cheapest source of fuel wood presently.

### 3.2. Legislative Problems

Any activity that disturbs the sustainability of ecosystems or threatens conservation of ecosystems, representatives of flora and fauna, objects with scientific or historical-cultural value is forbidden on the territory of sanctuaries (Article 18, RA Law on SPNAs, 27.11.2006).

According to the RA Land Code (Article 20, 02.05.2001) sanctuaries according to their functional significance belong to the category of environmental lands of specially protected areas of RA land fund. The Code (Article 19) defines special legal regime for the lands of specially protected areas. The Code (Article 25) classifies forest lands and their functional significance, which can include lands of agricultural significance (pastures, arable lands, bushes, etc.), which do not require special management regime (the functional categories and regimes are not specified for the cases they get status of SPNA, forest environmental lands and their requirements are not defined).

According to the RA Forest Code (Article 10, 24.10.2005) the forests are classified by their main special-purpose significance to forests of protection, production and special significance. Forests of special significance include SPNA forests, including sanctuaries. The Code does not define the management peculiarities and functions of forests included in SPNA system, except from the functions of forest use (Article 42, Clause 1) and conservation (Article 12, Clause 3); the rest is regulated by the RA Law on SPNAs. The law does not regulate the abovementioned issues; however, it makes a reference to itself (Article 12, Clause 3).

SPNAs of Armenia (Article 4, RA Law on SPNAs) are classified by their significance and category. State Sanctuaries are under a separate category and can be included in the structure of National Parks. According to the Article 7 of the Law, the National Parks encompass reserve, recreational and economic zones. The same Article further states that the National Parks can comprise State Sanctuaries, meaning that the State Sanctuary can also be a National Park zone, but according to the item *b* of Clause 1 of the Article 4 of the Law the State Sanctuary is a specially protected area of another category.

The Law does not clearly specify the peculiarities of the sanctuary management; however it states (Article 18) that all the goals and characteristics of conservation regime are regulated by the charter of the given State Sanctuary. According to the RA Constitution, the Sanctuary regime has to be determined by the Law (not by Charter - the same applies to the National Parks) as far as it is a mandatory legal provision. The principles and mechanisms of SPNA classification are also not defined.

The Law determines SPNA conservation zones (Article 4), however it does not define their status, competences, uses and restrictions. The economic activities in SPNAs (including Sanctuaries) and their neighbouring zones are not regulated by by-laws and normative documents. The requirements regulating traditional nature use by local communities surrounding the SPNAs, their privileges, compensations and mechanisms of enforcing environmental restrictions determined by the conservation regime need to be further clarified.

### 3.3. Institutional Problems

Forest sanctuaries in Armenia belong to different institutions and do not have unified management (Annex 2). The management competences, in particular the frames of the responsibilities of authorised and state bodies, are not differentiated at different levels, the conservation and utilisation regimes are not clarified. 13 State Sanctuaries out of 27 are in the structure of MoNP RA, 13 are in the structure “Hayantar” SNCO of MoA (Forest Enterprises), and one (“Aragats Alpine” State Sanctuary) is in the structure of “Institute of Physics” of the Ministry of Economics.

Around 25% of forest areas (SPNAs) are managed by Bioresources Management Agency of MoNP RA and its respective SNCOs. State Sanctuaries are included in the structure of National Parks, State Reserves, “Reserve-Park Complex” and “Forest Research Experimental Centre” SNCOs. Seven sanctuaries have Charters approved by the RA Government. Sanctuaries that are included in the structure of SNCOs and have Charters have more or less satisfactory level of management. MoNP RA is vested with the authority of control over state forest, though the Article 7, Clause 1, item (l) of the Forest Code states that the control over forest legislation enforcement should be implemented by the MoA RA. The control is implemented by the State Environmental Inspection consistent with its Charter. The Decree on the Approval of the Order for Organisation and Implementation of Monitoring in the SPNAs was approved by the RA Government (30.08.07, N 1044-N). By this Decree the MoNP RA shall implement monitoring according to methodological instructions.

The RA MoA is the RA Government authorised state management body in the sphere of forest conservation, protection, reproduction and use. The Ministry implements its functions through the Department of Plant Breeding, Plant Protection and Forest Economy, “State Forest Monitoring Centre” SNCO and “Hayantar” SNCO. Around 75% of forest areas, including 13 State Sanctuaries, are managed by “Hayantar” SNCO and its regional branches - Forest Enterprises.

The Regulation on State Forest Monitoring was defined by the RA Government Decree N 198, 25.01.2007 (derives from the Article 3 of the Forest Code). According to the Regulation, forest monitoring is the process of observations, studying and assessment conducted for the purpose of forecasting the condition of forests and forest lands. “State Forest Monitoring Centre” monitors all the forests of RA territory (including SPNAs) mainly with the purpose to detect forest violations.

The forest sanctuaries in the structure of “Hayantar” SNCO do not have Charters and do not meet the requirements on conservation and use defined by legislation. There is a lack of specialised staff, as well as knowledge on biological diversity of the areas and protection objects. In some cases, the boundaries and location of sanctuaries is not clear, there are no boundary posts, barriers and information infrastructures.

Forest conservation, protection and utilisation activities are not regulated due to the absence of management regime of sanctuaries. The Charters do not specify the types of allowed activities, functions of conservation, protection, rehabilitation, reproduction of natural ecosystems, landscape and biological diversity, gene pool, nature heritage, as well as scientific research, inventory of biological diversity, stock-taking, monitoring, awareness and eco-cognitive tourism.

The functions of the monitoring and control of forest biological diversity need to be further clarified among “Hayantar” and “State Forest Monitoring Centre” SNCO of the RA MoA as well as BMA and SEI of the RA MoNP.

## CHAPTER 4

### 4.1. Criteria Applied for the Selection of Sanctuaries

Several approaches have been applied for the selection of Sanctuaries for AFSMLEE. Existence of forest management problems, non-clarity of boundaries, non-regulated forest use, development potential, level of threat to biological diversity and its value were applied as selection criteria. The proposals by “Hayantar” SNCO of MoA, presence of cartographic materials of the sanctuaries and management plans of Forest Enterprise were also considered.

The results of the pre-assessment of SPNA METT carried out by WWF Armenia in the framework of UNDP/GEF project “Developing the Protected Area System of Armenia” during March- April 2009 were used as additional selection criteria. According to the mentioned survey, the sanctuaries in the structure of “Hayantar” SNCO of the RA MoA have low management effectiveness.

Based on the abovementioned selection criteria “Ijevan” State Sanctuary (which includes “Arjatkhlendi Hazelnut” State Sanctuary entirely located within the territory of “Ijevan” State Sanctuary, therefore together considered as one pilot area) and “Gyulagarak Pine” State Sanctuaries in the structure of “Hayantar” SNCO were selected as pilot areas for assessment.

One more pilot area under the RA MoNP not foreseen in the Terms of References for AFSMLEE was selected for the assessment. It is the area of “Zikatar” Forest Training Centre in the structure of “Forest Research-Experimental Centre” SNCO of the RA MoNP. This area has got a status of sanctuary in April, 2010 by the RA Government Decree. This area is selected for comparison of management systems of Sanctuaries under different Ministries and assessment of future development processes.

### 4.2. Description of Sanctuaries (see Map 1)

#### 4.2.1. “Ijevan” State Sanctuary

- Year of establishment and area - Decree of the Council of Ministers of ArmSSR N 375, dated 16.11.1971; 5908 ha
- Location- Northern Armenia, Tavush Marz, slopes of Ijevan and Kayen Mountain Ranges, River Aghstev Basin. 900-2100 m above sea level
- Objective of establishment - Protection of rare and valuable plant and animal species
- Subordination - RA MoA, “Hayantar” SNCO, “Ijevan” and “Sevqar” Forest Enterprises

The main objective of the sanctuary establishment is the protection of rare and valuable plant species, such as *Corylus colurna*, *Acer trautvetteri*, *Anacamptis pyramidalis*, *Atropa belladonna*, *Cephalanthera damasonium*, *Corydalis marschalliana*, as well as animal species, like *Ursus arctos syriacus*, *Felis lynx*, *Felis silvestris caucasica*, *Capreolus capreolus*, *Sus scrofa*, *Canis lupus*, *Vulpes vulpes*, *Meles meles*, *Lepus europaeus*.

The area has good potential for ecotourism development (high biodiversity potential, historical-archaeological monuments, beautiful scenery, rocks, waterfalls, gorges etc).

#### 4.2.2. “Arjatkhlendi Hazelnut” State Sanctuary

- Year of establishment and area - Decree of the Council of Ministers of ArmSSR N 341, dated 13.09.1958; 40 ha

- Location - Northern Armenia, Tavush Marz, northern slopes of Ijevan Mountain Range. Khakhaghbyur River Basin, 1500-1800 m above sea level
- Objective of establishment - Protection of relict groves of yew and hazel-nut
- Subordination - RA MoA, “Hayantar” SNCO, “Ijevan” Forest Enterprise

The main objective of the sanctuary establishment is the protection of *Corylus colurna* represented in mixed oak-hornbeam and ash forest stands. This species is rare not only in Armenia, but also in Caucasus.

#### 4.2.3. “Gyulagarak Pine” State Sanctuary

- Year of establishment and area - Decree of the Council of Ministers of ArmSSR N 341, 13.09.1958; 2576 ha
- Location - Northern Armenia, Lori Marz, slopes of Bazum and Gugark Mountain Ranges. “Qarhanqi Djur” River Basin, 1500-1800m above sea level
- Objective of establishment - Protection of relict pine (*Pinus kochiana*) forests
- Subordination - RA MoA, “Hayantar” SNCO, “Stepanavan” Forest Enterprise

The main protection object of the sanctuary is relict Caucasian pine forest (*Pinus kochiana*). Some species registered in the Red Data Book of Armenia can be seen in the sanctuary, including *Acer trautvetteri* and *Platanthera chlorantha*.

“Gyulagarak Pine” State Sanctuary has considerably suffered from cuttings during 1990-2000. The area has the necessary potential for development of recreation and ecotourism, provision of resort services.

#### 4.2.4. “Zikatar” State Sanctuary

- Year of establishment and area - Decree of the RA Government N380-N, dated 8.04.2010; 150 ha
- Location - RA, Tavush Marz, North-eastern slopes of Zikatar mountain of Gugarats Mountain Range. Zikatar Forest District of Noyemberyan Forest Enterprise; 1150-1450m above sea level
- Objective of establishment - Protection of forest biodiversity. Rare and endangered species and unique nature monuments, as well as habitats of endemic and rare animal species.
- Subordination - MoNP RA, “Forest Research Experimental Centre” SNCO.

The main protection object of the sanctuary is the specific flora and fauna of the forest ecosystems of Northern slopes of Zikatar Mountain, as well as rich historical-cultural heritage. The main forest forming species are Oriental Beech, Mountain Oak, Georgian Oak, Hornbeam, and the accompanying species are Oriental Hornbeam, Lime, Ash, Field Maple, Norway Maple, and others. The protection zone includes upper flows of Koghb River, as well as the basin surrounded with water distributors of slopes of Zikatar Mountain facing north. Some species registered in the Red Data Book of Armenia can be seen in the Sanctuary, including *Acer laetum*, *Acer trautvetteri*, *Anacamptis pyramidalis*, *Cephalanthera damasonium*, *Gladiolus italicus*, *Juglans regia* and others.

Favourable climate, presence of recreation resources and infrastructures are attractive for visits, which at present are not regulated.

### 4.3. The Results of the Assessment of Sanctuaries

Management Effectiveness Tracking Tools (Annex 3) were filled based on the interviews with the staff of “Hayantar” SNCO and selected sanctuaries, as well as on the results of the questionnaire to assess the law enforcement effectiveness (Annex 4). Questionnaires were filled by different staff members in the sanctuaries (Annex 5).

The score for “Ijevan”, “Arjatkhljeni hazelnut” and “Gyulagarak Pine” State Sanctuaries is 31, while the score for “Zikatar” State Sanctuary is 47. The difference of the scores is mainly conditioned by the management peculiarities of the sanctuaries. The analysis of assessment results showed, that the sanctuaries mainly have the same problems, but there are also issues of local character related to the boundaries, non-clarity of protection objects, non sufficient capacities and others. Therefore general proposals on improvement of management effectiveness and law enforcement were developed for all of the Sanctuaries (Table 4). Proposals on measures aimed at improving management were presented for each of the Sanctuaries.

#### 4.3.1. “Ijevan” and “Arjatkhljeni Hazelnut” State Sanctuaries

The meetings with the staff and analysis of completed questionnaires showed, that the management activities and implementation of functions are not sufficient in the sanctuaries. Most of the staff members of “Ijevan” and “Sevqar” Forest Enterprises are not aware of protection objects, protection regime and peculiarities of use in “Ijevan” and “Arjatkhljeni Hazelnut” State Sanctuaries. The sanctuaries do not have appointed staff for their protection, the material and technical basis for implementation of protection is weak.

Sanctuaries do not have Charters and management plans (the measures for 10 years are planned for “Ijevan” and “Sevqar” Forest Enterprises in respective management plans approved in 2006, however, the measures for the territory of sanctuaries are not developed as those for SPNAs). Sanctuaries do not have approved boundaries and cadastral maps. Boundaries and the status of their buffer zones are not clear, normative documents regulating economic activities and their enforcement mechanisms are missing.

The area of “Ijevan” State Sanctuary has severely suffered from massive loggings during 1990-2000, and continuing until now, however, gasification of the communities, ongoing institutional and legislative reforms in the forest sector during the last years have led to the decrease of illegal loggings. Many of the problems are still related to non-sufficient financing and technical provision, non-regulated forest use, scientific and ecotourism activities, professional staff, infrastructures and information.

With respect to the management, the area of “Ijevan” State Sanctuary is split and located within two forest enterprises (Map 2. Ijevan Forest District of “Ijevan” Forest Enterprise and Achajur Forest District of “Sevqar” Forest Enterprise), meaning that the sanctuary is managed by two different administrative units, which is not reasonable. At the same time “Arjatkhljeni Hazelnut” State Sanctuary is entirely within the area of “Ijevan” State Sanctuary (Ijevan Forest District). Its area is defined to be 40 ha, while (according to the forest management plan for “Ijevan” Forest Enterprise and the map) the valuable plots with hazelnut in forest composition take up around 750 ha within “Ijevan” State Sanctuary (Ijevan Forest District). The presence of two sanctuaries in the same area (Ijevan Forest District of “Ijevan” Forest Enterprise) does not have any justification. From the management effectiveness point of view, it is not expedient to have “Ijevan” State Sanctuary managed by two Forest

Enterprises, considering also that there are no serious scientific justifications to have a sanctuary in the structure of Achajur Forest District of “Sevqar” Forest Enterprise. Thus, the following is proposed:

- Merge “Arjatkhlendi Hazelnut” (entirely included in the area of “Ijevan” State Sanctuary) and “Ijevan” State Sanctuaries and establish “Ijevan Arjatkhlendi Hazelnut” Sanctuary;
- Take out 2700 ha of “Ijevan” State Sanctuary of Achajur Forest District of “Sevqar” Forest Enterprise from the status of Sanctuary (in the future it can serve as ecological corridor between the Sanctuary and “Kirants” Natural Park still to be established, see Map 2);
- Define the area of “Ijevan Arjatkhlendi Hazelnut” Sanctuary as 3200 ha (instead of current 5908 ha);
- Define the main protection objective as conservation of high-value forest ecosystem (including hazelnut and forest fauna);
- Appoint special staff of Ijevan Forest District of “Ijevan” Forest Enterprise to implement the management and conservation of the Sanctuary.

#### **4.3.2. “Gyulagarak Pine” State Sanctuary**

The meetings with the staff and analysis of completed questionnaires showed, that the management activities and implementation of functions are not sufficient, but the protection of the sanctuary is sufficient. The forest management plan for “Stepanavan” Forest Enterprise was approved in March 2010, but it does not provide details on the peculiarities of sanctuary management. The staff of the enterprise is not aware of the conservation regime and types of allowed activities within the sanctuary.

According to the management plan, the area of the sanctuary is 2722 ha, while it was defined 2576 ha in the Decree of the Council of Ministers of ArmSSR N 341, 13.09.1958. The area is divided to 8 parcels (2 forest officer, 8 guards). The sanctuary does not have Charter, professional staff, weapons, approved boundaries and cadastral map. The main issues are related to non sufficient financing and technical provision, non systematic scientific activities, monitoring, absence of management plan (for SPNA), professional staff, infrastructures and lack of information.

The stands of valuable pine are mainly located within Gyulagarak Forest District (Map 3), so to promote purpose-oriented conservation the following is proposed:

- Limit the area of the Sanctuary by current area of Gyulagarak Forest District of “Stepanavan” Forest Enterprise (Map 3).
- Only 1600 ha area where Caucasian pine takes part in the forest composition and 32,88 ha area of Stepanavan arboretum should be included in the structure of the sanctuary.

#### **4.3.3. “Zikatar” State Sanctuary**

The meetings with the staff and analysis of completed questionnaires showed, that the management activities and implementation of functions are sufficient in the sanctuary. The sanctuary is established by the Government Decree 8.04.2010 in the structure of “Forest Research Experimental Centre” SNCO of the RA MoNP. The sanctuary has staff with the following composition: 1 forester, 1 head of nursery and 2 guards. The material and technical basis is weak, necessary technical means and equipment for the implementation of protection and training activities are partly missing.

The sanctuary has approved boundaries. The approval of the Charter of the sanctuary by the Minister of Nature Protection is in the process. The main problems are related to the lack of financing and technical provision, non systematic scientific and non-regulated ecotourism activities, insufficient professional staff and infrastructures. The status of the buffer zone is unclear. The main tasks of the sanctuary pursuant to Charter are implementation of scientific-experimental activities, staff retraining and organisation of field studies. For fulfilment of these tasks it is necessary to increase the potential of the organization for scientific-experimental and educational activities, as well as regional cooperation. It is also necessary to organize exchange programs. The rehabilitation of nursery (2 ha) is necessary for the organization of practical trainings, training courses and retraining.

**Table 3. Current State of Management and Law Enforcement in Sanctuaries (summary)**

Sanctuary	“Ijevan”	“Arjatkhlenti Hazelnut”	“Gyulagarak Pine”	“Zikatar”
<b>Government Decree on Establishment</b>	Decree of the Council of Ministers of ArmSSR N 212, 19.04.1971	Decree of the Council of Ministers of ArmSSR N 341, 13.09.1958	Decree of the Council of Ministers of ArmSSR N 341, 13.09.1958	RA Government Decree N 380-N, 08.04.2010
<b>Charter</b>	missing			approval is in the process
<b>Management body</b>	“Ijevan” Forest Enterprise, “Hayantar” SNCO, RA MoA		“Stepanavan” Forest Enterprise, “Hayantar” SNCO, RA MoA	“Forest Research Experimental Centre”, RA MoNP
<b>Main threats</b>	<ul style="list-style-type: none"> <li>• Non-sufficient information on main conservation objects</li> <li>• Non-clarity of protection regime and use peculiarities</li> <li>• Non-regulated forest use, monitoring, scientific and ecotourism activities</li> <li>• Dependence on the forest resources by the population</li> </ul>			Small area
<b>Inventory</b>	Inventory data is presented in the forest management plans of respective forest enterprises			
<b>Map with approved boundaries</b>	Do not have approved boundaries as sanctuaries, they are described as Forest Enterprise areas, absence of cadastral maps			Has approved map with boundaries, which does not have cadastral

				registration
<b>Reasonability of boundaries and design</b>	Boundaries of the sanctuaries need to be revised and scientifically justified			
<b>Presence of buffer zone</b>	Buffer zones do not have legal status			
<b>Presence of management plan with management objectives</b>	There are no SPNA management plans, only management plans for forest enterprises			Draft management plan for the sanctuary is in place
<b>Staff capacity</b>	non sufficient	non sufficient	non sufficient	partly sufficient
<b>Need for staff training</b>	+	+	+	+
<b>Need for additional staff</b>	+	+	+	+
<b>Technical means</b>	non sufficient	non sufficient	non sufficient	non sufficient
<b>Financing</b>	non sufficient	non sufficient	non sufficient	missing
<b>Scientific research and monitoring</b>	non sufficient	non sufficient	non sufficient	sufficient
<b>Tourism activities</b>	non-regulated	non-regulated	non-regulated	non-regulated
<b>Need for infrastructures (information boards, barriers, etc.)</b>	+	+	+	+

#### 4.4. Proposals on Improvement of Management and Law Enforcement

Considering the fact that the sanctuaries in focus share similar problems in the sphere of management and legislation, the following is proposed aimed at improvement of their management and law enforcement (Table 4). The proposals are applicable also for all the other forest sanctuaries in Armenia.

**Table 4. Proposed Measures for Improvement of Management and Law Enforcement in Sanctuaries**

<b>Law Enforcement</b>	
<b>1</b>	Revision of RA Forest Code and Law of RA on Specially Protected Nature Areas
<b>2</b>	Development of sanctuary charters and compliance with RA legislation
<b>3</b>	Development of regulation on organisation of recreation and ecotourism
<b>4</b>	Regulation of forest use (regulation of the types of permitted activities, restrictions and use)
<b>5</b>	Clarification of the legal status of buffer zones
<b>6</b>	Preparation of management plans for sanctuaries (including programs on organisation of recreation and ecotourism, financial sustainability and improvement, biodiversity monitoring and information and awareness rising)
<b>Management Improvement</b>	
<b>1</b>	Staff recruitment (forester, botanist, zoologist, computer operator, tourism specialist, lawyer, other needed specialists)
<b>2</b>	Staff training, re-training (biodiversity monitoring, conservation, protection, ecotourism, etc.)
<b>3</b>	Technical provision for staff (off-road vehicles, horses, field uniform and equipment)
<b>4</b>	Establishment of recreation and ecotourism infrastructures (information points, billboards, pavilions, trails, etc.)
<b>5</b>	Mapping and demarcation of areas
<b>6</b>	Establishment of necessary infrastructure for protection (barriers, ranger houses, fences, etc.)
<b>7</b>	Implementation of scientific researches and monitoring of biological diversity
<b>8</b>	Provision of information (awareness raising, provision of data to staff members, etc.)

*Reserves and National Parks of the Republic of Armenia*

Name	Year of Establishment	Area and Location	Protected Objects	Subordination
<b>State Reserves</b>				
“Khosrov Forest” State Reserve	Council of Ministers ArmSSR N341, 13.09.1958	23 003 ha, Ararat Marz. Slopes of Urts and Yeranos Ranges. 700 - 2800 m above sea level	Dry, open woodland landscapes, unique flora and fauna associations	MoNP RA, “Khosrov Forest State Reserve” SNCO
“Shikahogh” State Reserve	Council of Ministers ArmSSR N 341, 13.09.1958	12137,075 ha, Syunik Marz, Tsav and Shikahogh River Basins., 700-2400 m above sea level	Oak-hornbeam forests, plane and yew grove, Bezoar goat, Indian porcupine, Caucasian leopard	MoNP RA, “Shikahogh State Reserve” SNCO
“Erebuni” State Reserve	Council of Ministers ArmSSR N324, 27.05.1981.	South-Eastern vicinities of Yerevan City, 1300-1400 m above sea level	Preservation of wild cereals ad their habitats	MoNP RA, “Reserve-Park Complex” SNCO
<b>National Parks</b>				
“Sevan National” Park	1978 Decree of the RA Government N 205-N, 19.01.07 approved the management plan and the size of the National park	147456 ha, Gegharkunik Marz, Lake Sevan basin, 1896-2000 m above sea level	High mountainous lake ecosystem, endemic species of fish, plants and animals. Resting sites for migratory waterfowl	MoNP RA, “Sevan National Park” SNCO
“Dilijan” National Park	2002, RA Governmental Decree N 204-H, 19.01.07. approved the management plan and the size of the National park	33765 ha, Basins of Aghstev and Getik Rivers. 1070-2400 m above sea level	Mesophilous oak and beech forests, unique yew grove, species of vertebrate animals, 902 species of vascular plants,	MoNP RA, “Dilijan National Park” SNCO
“Arpi Lich” National Park	RA Government Decree N 405-N, dated 16. 04.2009	App 25000 ha, Shirak Marz, Ashotsk and Amasia Regions, 2000-3300 m above sea level	Preservation of water ecosystems of Arpi Litsh and unique ecosystems of Javakhk range	MoNP RA, “Arpi Litsh National Park” SNCO
“Arevik” National Park	RA Government Decree N 1209-N, dated 15. 10.2009	34401.8 ha, Syunik Marz, Southern slopes of Meghri mountain of Zangezur Maountain Range, 800- 3000 m above sea level	Preservation of biological and landscape diversity of Meghri, Shvanidzor and Nuvad river basins	MoNP RA, “Arevik National Park” SNCO

***State Sanctuaries under the Ministry of Agriculture (“Hayantar” SNCO) of the Republic of Armenia***

N	Name and area	Year of Establishment and Decree	Protected objects	WWF Armenia pre-assessment score (METT), 2009
1	“Arjatkhlendi Hazelnut” State Sanctuary, Ijevan Forest Enterprise, 40 ha	Decree of the Council of Ministers of ArmSSR N 341, 13.09.1958	Relict groves of hazel-nut ( <i>Corylus Columna</i> )	9
2	“Pine of Banx” Sanctuary (Hrazdan Forest Enterprise), 4 ha	Decree of the Council of Ministers of ArmSSR N20	Unique planted stands of pine of Banx	9
3	“Her-Her Open Woodland” State Sanctuary (Yeghegis Forest Enterprise), 6139 ha	Decree of the Council of Ministers of ArmSSR N 341, 13.09.1958	Relict yew open woodland and remnant orchards of pear	9
4	“Jermuk” State Sanctuary (Eghegnadzor Forrest Enterprise), 3865 ha	Decree of the Council of Ministers of ArmSSR N 341, 13.09.1958	Rare animals - Armenian mouflon, Bezoar goat, brown bear, Caucasian leopard	9
5	“Gyulagarak Pine” State Sanctuary (Stepanavan Forest Enterprise, 2576 ha	Decree of the Council of Ministers of ArmSSR N 341, 13.09.1958	Relict pine forests	9
6	“Caucasian Rose-bay” State Sanctuary (Gugark Forest Enterprise), 1000 ha	Decree of the Council of Ministers of ArmSSR N20, 29.01.1959	Caucasian rose-bay ( <i>Rhododendron caucasicum</i> )	9
7	“Margahovit” State Sanctuary (Gugark Forest Enterprise), 3368ha	Decree of the Council of Ministers of ArmSSR N 212, 19.04.1971	Forest animals - roe-deer, brown bear, red deer, Caucasian black grouse	9
8	“Arzakan and Meghadzor” State Sanctuary (Hrazdan Forest Enterprise), 13532 ha	Decree of the Council of Ministers of ArmSSR N 212, 19.04.1971	Rare and valuable animal species - brown bear, roe-deer, black grouse and other forest species	9
9	“Ijevan” State Sanctuary (Ijevan Forest Enterprise), 5908 ha	Decree of the Council of Ministers of ArmSSR N 212, 19.04.1971	Rare and valuable animal species - brown bear, roe-deer, black grouse and other forest species	9
10	“Gandzakar” State Sanctuary (Ijevan Forest Enterprise), 6813 ha	Decree of the Council of Ministers of ArmSSR N 212,	Rare and valuable animal species - brown bear, roe-deer, black grouse and other forest species, mountainous forests	9

		19.04.1971		
11	“Getik” (Jambarak Forest Enterprise), 5728 ha	Decree of the Council of Ministers of ArmSSR N 212, 19.04.1971	Rare and valuable animal species - roe-deer, brown bear, wild boar, black grouse	9
12	“Yeghegnadzor” State Sanctuary ( Yeghegis Forest Enterprise), 4200 ha	Decree of the Council of Ministers of ArmSSR N375, 16.11.1971	Rare and valuable animal species - Bezoar goat, Armenian mouflon, Caucasian leopard, rich diversity of wild wheat	9
13	“Goris” State Sanctuary (Goris Forest Enterprise), 1850 ha	Decree of the Council of Ministers of ArmSSR N775, 16.11.1972	Forest ecosystems typical for the region, threatened species of flora and fauna	9

*State Sanctuaries under the Ministry of Nature Protection of the Republic of Armenia*

N	Name and area	Year of Establishment and Decree	Protected objects	WWF Ar-menia pre-assessment score (METT), 2009
1	“Boghakar” State Sanctuary (“Arevik National Park” SNCO), 2728 ha	Decree of the Council of Ministers of ArmSSR N400, 10.08.1989	Typical species of Southern Armenian flora and fauna	9
2	“Akhnabat Yew Grove” State Sanctuary (“Dilijan National Park” SNCO), 25 ha	Decree of the Council of Ministers of ArmSSR N20, 29.01.1959	Unique relict yew grove	14
3	“Goravan Sands” State Sanctuary (“Khostrov Forest State Reserve” SNCO), 200 ha	Decree of the Council of Ministers of ArmSSR N20, 29.01.1959	Remnant sands with unique species of plants and animals	17
4	“Juniper Open Woodlands” State Sanctuary (“Sevan National Park” SNCO), 3312ha	Decree of the Council of Ministers of ArmSSR N 341, 13.09.1958	Unique relict juniper and oak open woodlands with typical fauna and flora	14
5	“Plane Grove” State Sanctuary (“Shikahogh State Reserve” SNCO), 60 ha	Decree of the Council of Ministers of ArmSSR N 341, 13.09.1958	The only natural plane grove in the Caucasus	17
6	“Vordan Karmir” State Sanctuary (“Reserve-Park Complex” SNCO), 200 ha	Decree of the Council of Ministers of ArmSSR N61, 03.02.1987	Ararat cochineal and typical semi-desert vegetation,	14
7	“Sev Lich” State Sanctuary (“Reserve-Park Complex” SNCO), 240 ha	Decree of the Council of Ministers of ArmSSR N717, 17.10.1987	High mountainous volcanic reservoir and adjacent areas with plant and animal associations	13
8	“Khor Virap” State Sanctuary (“Khostrov Forest State Reserve” SNCO), 50,28 ha	RA Governmental Decree N 975-N 25.01.07	Wetland ecosystems and typical species of plants and animals	16
9	“Gilan” State Sanctuary (“Khostrov Forest State Reserve” SNCO), 118ha	RA Governmental Decree N 673-N, 24.05.07	Mountainous-forest ecosystems	17
10	“Zangezur” State Sanctuary (“Shikahogh State Reserve” SNCO), 17368.77 ha	RA Governmental Decree N 1187-N, 15. 10.2009	Typical species of Southern Armenian flora and fauna	-
11	“Jermuk” hydrological State Sanctuary, (“Reserve-Park Complex” SNCO), 18000 ha	Decree of the Council of Ministers of ArmSSR N148, 23.03.1981	Mineral water Jermuk	6
12	“Hankavan” hydrological State Sanctuary (“Reserve-Park Complex” SNCO), 9350ha	Decree of the Council of Ministers of ArmSSR N148, 23.03.1981	Mineral water Hankavan	6
13	“Zikatar” State Sanctuary (“Forest Research Experimental Centre” SNCO)	RA Governmental Decree, 08.04.2010	Preservation of forest biodiversity, rare and endangered species	-

## PA Management Effectiveness Tracking Tool

### 1. Information on the State Sanctuaries

#### Sanctuary 1 - “Arjatkhlēni Hazelnut” State Sanctuary

Name, affiliation and contact details for person responsible for completing the METT (email etc.)		Armen Gevorgyan, 3, Baghramyan str., 0019, Yerevan, Armenia Tel/fax 374 10 56 38 22, mob: 374 91 35 01 29 email: <a href="mailto:agevorgyan@jointsecretariat.org">agevorgyan@jointsecretariat.org</a>			
Date assessment carried out	March, 2010				
Name of protected area	“Arjatkhlēni” State Sanctuary				
WDPA site code (these codes can be found on <a href="http://www.unep-wcmc.org/wdpa/">www.unep-wcmc.org/wdpa/</a> )					
Designations	National +	IUCN Category IV	International (please also complete sheet overleaf )		
Country	Republic of Armenia				
Location of protected area (province and if possible map reference)	North East of RA, Tavush region				
Date of establishment	1958				
Ownership details (please tick)	State +	Private	Communit ity	Other	
Management Authority	“Ijevan” Forest Enterprise, “Hayantar” SNCO, MoA				
Size of protected area (ha)	40 ha				
Number of staff	Permanent Staff was not specified		Temporary		
Annual budget (US\$) – excluding staff salary costs	Recurrent (operational) funds N/A		Project or other supplementary funds N/A		
What are the main values for which the area is designated	Relict groves of Hazel nut and yew trees				
List the two primary protected area management objectives					
Management objective 1	Protection of Relict groves of Hazel nut and yew tree				
Management objective 2					
No. of people involved in completing assessment					
Including: (tick boxes)	PA manager <input type="checkbox"/> +	PA <input type="checkbox"/> +	staff	Other PA agency staff <input type="checkbox"/>	NGO <input type="checkbox"/>
	Local community <input type="checkbox"/>	Donors <input type="checkbox"/>		External experts <input type="checkbox"/>	Other <input type="checkbox"/>
Please note if assessment was carried out in association with a particular project, on behalf of an organisation or donor.		The assessment was done in the frame of the ENPI-FLEG project			

**Sanctuary 2: “Ijevan” State Sanctuary**

Name, affiliation and contact details for person responsible for completing the METT (email etc.)		Pavel Abovyan 2 Teryan st, Town Noyemberyan, marz Tavush, RA Tel: (374)266 225 70, (374)093 63 44 22 E-mail: verelk@mail.ru		
Date assessment carried out	March, 2010			
Name of protected area	“Ijevan” State Sanctuary			
WDPA site code (these codes can be found on <a href="http://www.unep-wcmc.org/wdpa/">www.unep-wcmc.org/wdpa/</a> )				
Designations	National +	IUCN Category IV	International (please also complete sheet overleaf )	
Country	Republic of Armenia			
Location of protected area (province and if possible map reference)	North East of RA, Tavush region			
Date of establishment	1971			
Ownership details (please tick)	State +	Private	Communit y	Other
Management Authority	“Ijevan” Forest Enterprise, “Hayantar” SNCO, MoA			
Size of protected area (ha)	5908 ha			
Number of staff	Permanent Staff was not specified		Temporary	
Annual budget (US\$) – excluding staff salary costs	Recurrent (operational) funds N/A		Project or other supplementary funds N/A	
What are the main values for which the area is designated	Rare and valuable animal species			
List the two primary protected area management objectives				
Management objective 1	Protection of Relict groves of Hazel nut and yew trees			
Management objective 2	Rare and valuable animal species			
No. of people involved in completing assessment				
Including: (tick boxes)	PA manager <input type="checkbox"/> +	PA staff <input type="checkbox"/> +	Other PA agency staff <input type="checkbox"/>	NGO <input type="checkbox"/>
	Local community <input type="checkbox"/>	Donors <input type="checkbox"/>	External experts <input type="checkbox"/>	Other <input type="checkbox"/>
Please note if assessment was carried out in association with a particular project, on behalf of an organisation or donor.		The assessment was done in the frame of the ENPI-FLEG project		

**Sanctuary 3: “Gyulagarak” State Sanctuary**

Name, affiliation and contact details for person responsible for completing the METT (email etc.)		Armen Gevorgyan, 3, Baghramyan str., 0019, Yerevan, Armenia Tel/fax 374 10 56 38 22, mob: 374 91 35 01 29 email: agevorgyan@jointsecretariat.org			
Date assessment carried out		April, 2010			
Name of protected area		“Gyulagarak” State Sanctuary			
WDPA site code (these codes can be found on <a href="http://www.unep-wcmc.org/wdpa/">www.unep-wcmc.org/wdpa/</a> )					
Designations	National +	IUCN Category IV		International (please also complete sheet overleaf )	
Country	Republic of Armenia				
Location of protected area (province and if possible map reference)		North of RA, Lori region			
Date of establishment	1958				
Ownership details (please tick)	State +	Private	Communi ity	Other	
Management Authority	“Stephanavan” Forest Enterprise, “Hayantar” SNCO, MoA				
Size of protected area (ha)	2576 ha				
Number of staff	Permanent 10		Temporary		
Annual budget (US\$) – excluding staff salary costs	Recurrent (operational) funds N/A		Project or other supplementary funds N/A		
What are the main values for which the area is designated	Relict Pine Forests				
List the two primary protected area management objectives					
Management objective 1	Protection Relict Pine Forests				
Management objective 2	Recreation and ecotourism				
No. of people involved in completing assessment					
Including: (tick boxes)	PA manager <input type="checkbox"/> +	PA staff <input type="checkbox"/> +	Other PA agency staff <input type="checkbox"/>		NGO <input type="checkbox"/>
	Local community <input type="checkbox"/>	Donors <input type="checkbox"/>	External experts <input type="checkbox"/>		Other <input type="checkbox"/>
Please note if assessment was carried out in association with a particular project, on behalf of an organisation or donor.			The assessment was done in the frame of the ENPI-FLEG project		

**Sanctuary 4: “Zikatar” State Sanctuary**

Name, affiliation and contact details for person responsible for completing the METT (email etc.)		Armen Gevorgyan, 3, Baghramyan str., 0019, Yerevan, Armenia Tel/fax 374 10 56 38 22, mob: 374 91 35 01 29 email: agevorgyan@jointsecretariat.org			
Date assessment carried out		April, 2010			
Name of protected area		“Zikatar” State Sanctuary			
WDPA site code (these codes can be found on <a href="http://www.unep-wcmc.org/wdpa/">www.unep-wcmc.org/wdpa/</a> )					
Designations	National +	IUCN Category IV		International (please also complete sheet overleaf)	
Country	Republic of Armenia				
Location of protected area (province and if possible map reference)		North of RA, Tavush region			
Date of establishment		2010			
Ownership details (please tick)		State +	Private	Community	Other
Management Authority		“Forest Research Experimental Centre” SNCO, MoNP			
Size of protected area (ha)		150 ha			
Number of staff		Permanent 4		Temporary	
Annual budget (US\$) – excluding staff salary costs		Recurrent (operational) funds N/A		Project or other supplementary funds N/A	
What are the main values for which the area is designated		High value mountainous forest ecosystems			
List the two primary protected area management objectives					
Management objective 1		Protection of forest ecosystems			
Management objective 2		Research, training, recreation and ecotourism			
No. of people involved in completing assessment					
Including: (tick boxes)	PA manager <input type="checkbox"/> +	PA staff <input type="checkbox"/> +	Other PA agency staff <input type="checkbox"/>	NGO <input type="checkbox"/>	
	Local community <input type="checkbox"/>	Donors <input type="checkbox"/>	External experts <input type="checkbox"/>	Other <input type="checkbox"/>	
Please note if assessment was carried out in association with a particular project, on behalf of an organisation or donor.		The assessment was done in the frame of the ENPI-FLEG project			

## 2. Assessment Form

**Sanctuary 1 (S1) – “Arjatkhleni” State Sanctuary**

**Sanctuary 2 (S2) – “Ijevan” State Sanctuary**

**Sanctuary 3 (S3) – “Gyulagarak” State Sanctuary**

**Sanctuary 4 (S4) – “Zikatar” State Sanctuary**

Issue	Criteria	Score: Tick only one box per question		Comment/Explanation	Next steps
1. Legal status  Does the protected area have legal status (or in the case of private reserves is covered by a covenant or similar)?  <i>Context</i>	The protected area is not gazetted/covenanted	0		S1: Decree of the Council of Ministries of Arm SSR N341, 1958  S2: Decree of the Council of Ministries of Arm SSR N375, 1971  S3: Decree of the Council of Ministries of Arm SSR N341, 1958  S4: Decree of the RA Government, April 2010	
	There is agreement that the protected area should be gazetted/covenanted but the process has not yet begun	1			
	The protected area is in the process of being gazetted/covenanted but the process is still incomplete (includes sites designated under international conventions, such as Ramsar, or local/traditional law such as community conserved areas, which do not yet have national legal status or covenant)	2			
	The protected area has been formally gazetted/covenanted	3	S1, S2, S3, S4		
2. Protected area regulations  Are appropriate regulations in place to control	There are no regulations for controlling land use and activities in the protected area	0		S1, S2,S3,S4: Review the law on PA	S1, S2,S3:Develop the charter and MP  S4:Develop management plan
	Some regulations for controlling land use and activities in the protected area exist but these are major weaknesses	1			
	Regulations for controlling land use and activities in the protected area exist but there are some weaknesses or gaps	2	S1,S2,S3,S4		

Issue	Criteria	Score: Tick only one box per question		Comment/Explanation	Next steps
land use and activities (e.g. hunting)?  <i>Planning</i>	Regulations for controlling inappropriate land use and activities in the protected area exist and provide an excellent basis for management	3			
3. Law enforcement  Can staff (i.e. those with responsibility for managing the site) enforce protected area rules well enough?  <i>Input</i>	The staff have no effective capacity/resources to enforce protected area legislation and regulations	0		S1,S2,S3,S4: Low capacities and skills	S1,S2,S3,S4:stuff trainings, capacity building,
There are major deficiencies in staff capacity/resources to enforce protected area legislation and regulations (e.g. lack of skills, no patrol budget, lack of institutional support)	1	S1, S2,S3 S4			
The staff have acceptable capacity/resources to enforce protected area legislation and regulations but some deficiencies remain	2				
The staff have excellent capacity/resources to enforce protected area legislation and regulations	3				
4. Protected area objectives  Is management undertaken according to agreed objectives?  <i>Planning</i>	No firm objectives have been agreed for the protected area	0		S1: S2: S3: Main conservation objectives and regimes are not clear S4: Staff of Sanctuary is not sufficient	S1, S2,S3,S4: Staff composition, clarification of boundaries, development of biodiversity monitoring system
The protected area has agreed objectives, but is not managed according to these objectives	1	S1, S2,S3			
The protected area has agreed objectives, but is only partially managed according to these objectives	2	S4			
The protected area has agreed objectives and is managed to meet these objectives	3				
5. Protected area design	Inadequacies in protected area design mean achieving the major objectives of the protected area is very difficult	0		S1: Located inside of another PA	S1, S2: Merge and make one Sanctuary

Issue	Criteria	Score: Tick only one box per question		Comment/Explanation	Next steps
<p>Is the protected area the right size and shape to protect species, habitats, ecological processes and water catchments of key conservation concern?</p> <p><i>Planning</i></p>	<p>Inadequacies in protected area design mean that achievement of major objectives is difficult but some mitigating actions are being taken (e.g. agreements with adjacent land owners for wildlife corridors or introduction of appropriate catchment management)</p>	1	S1, S2,S3	S2: Located in two different management units and area for conservation is not clearly justified	S3: Decrease area for conservation purposes
	<p>Protected area design is not significantly constraining achievement of objectives, but could be improved (e.g. with respect to larger scale ecological processes)</p>	2	S4	S3: Area for conservation is not clearly justified	S4: Increase the area of Sanctuary
	<p>Protected area design helps achievement of objectives; it is appropriate for species and habitat conservation; and maintains ecological processes such as surface and groundwater flows at a catchment scale, natural disturbance patterns etc</p>	3		S4: Protected area occupies relatively small area	
<p><b>6. Protected area boundary demarcation</b></p> <p>Is the boundary known and demarcated?</p> <p><i>Process</i></p>	<p>The boundary of the protected area is not known by the management authority or local residents/neighbouring land users</p>	0		S1, S2,S3: Needs to be demarcated	S1, S2,S3: Prepare scientific justification of boundaries and demarcation
	<p>The boundary of the protected area is known by the management authority but is not known by local residents/neighbouring land users</p>	1	S1, S2,S3		
	<p>The boundary of the protected area is known by both the management authority and local residents/neighbouring land users but is not appropriately demarcated</p>	2		S4: Needs to be partly fenced	
	<p>The boundary of the protected area is known by the management authority and local residents/neighbouring land users and is appropriately demarcated</p>	3	S4		
7. Management	There is no management plan for the protected area	0	S1, S2,S3:S4	S1, S2,S3: S4: There are	S1, S2,S3: S4: Forest

Issue	Criteria	Score: Tick only one box per question		Comment/Explanation	Next steps
Is there a management plan and is it being implemented?  <i>Planning</i>	A management plan is being prepared or has been prepared but is not being implemented	1		approved forest (not SPNA) management plans	management plans should be adapted for PA management
	A management plan exists but it is only being partially implemented because of funding constraints or other problems	2			
	A management plan exists and is being implemented	3			
<i>Additional points: Planning</i>					
7a. Planning process	The planning process allows adequate opportunity for key stakeholders to influence the management plan	+1			
7b. Planning process	There is an established schedule and process for periodic review and updating of the management plan	+1	S1, S2,S3:S4	S1, S2,S3: S4: Management plans should be reviewed each 10 years	S1, S2,S3, S4: Content of management plans should be incorporated with the International criteria (IUCN).
7c. Planning process	The results of monitoring, research and evaluation are routinely incorporated into planning	+1			
8. Regular work plan  Is there a regular work plan and is	No regular work plan exists	0		S1, S2,S3: S4 Lack of	S1, S2,S3: S4 Sustain
	A regular work plan exists but few of the activities are implemented	1	S1, S2,S3:S4		
	A regular work plan exists and many activities are implemented	2			

Issue	Criteria	Score: Tick only one box per question		Comment/Explanation	Next steps
it being implemented <i>Planning/Outputs</i>	A regular work plan exists and all activities are implemented	3		financing for annual work plans	state financing
9. Resource inventory  Do you have enough information to manage the area?  <i>Input</i>	There is little or no information available on the critical habitats, species and cultural values of the protected area	0		S1, S2,S3: No regular monitoring and scientific researches	S1, S2,S3, S4: Develop scientific research and monitoring programmes
Information on the critical habitats, species, ecological processes and cultural values of the protected area is not sufficient to support planning and decision making	1	S1, S2,S3:			
Information on the critical habitats, species, ecological processes and cultural values of the protected area is sufficient for most key areas of planning and decision making	2	S4			
Information on the critical habitats, species, ecological processes and cultural values of the protected area is sufficient to support all areas of planning and decision making	3				
10. Protection systems  Are systems in place to control access/resource use in the protected area? <i>Process/Outcome</i>	Protection systems (patrols, permits etc) do not exist or are not effective in controlling access/resource use	0		S1, S2, S3 - Protection systems are partially focused on resources and not on the habitats, species, ecological processes and cultural values.	S1, S2, S3: Adapt protection systems to the PA management requirements.
Protection systems are only partially effective in controlling access/resource use	1	S1, S2,S3:			
Protection systems are moderately effective in controlling access/resource use	2	S4			
Protection systems are largely or wholly effective in controlling access/ resource use	3				
11. Research  Is there a programme of management-orientated survey	There is no survey or research work taking place in the protected area	0		S1, S2,S3: Survey directed towards the needs of protected area management focused only on illegal logging	S1, S2,S3: Need to develop MPs with survey and research works program
There is a small amount of survey and research work but it is not	1	S1, S2,S3:			
There is considerable survey and research work but it is not directed towards the needs of protected area management	2	S4			

Issue	Criteria	Score: Tick only one box per question		Comment/Explanation	Next steps
and research work? <i>Process</i>	There is a comprehensive, integrated programme of survey and research work, which is relevant to management needs	3		monitoring and control. Research works are not systematic.	
12. Resource management  Is active resource management being undertaken?  <i>Process</i>	Active resource management is not being undertaken	0		S1, S2,S3: Resource management addressed mostly on harvesting and not to the conservation of critical habitats and species.	S1, S2, S3 S4: Achieve objectives of active management of ecosystems.
Very few of the requirements for active management of critical habitats, species, ecological processes and cultural values are being implemented	1	S1, S2,S3			
Many of the requirements for active management of critical habitats, species, ecological processes and, cultural values are being implemented but some key issues are not being addressed	2	S4			
Requirements for active management of critical habitats, species, ecological processes and, cultural values are being substantially or fully implemented	3				
13. Staff numbers  Are there enough people employed to manage the protected area?  <i>Inputs</i>	There are no staff	0		S1, S2,S3 S4: Luck of sufficient professional staff for critical management activities	S1, S2,S3 S4: Increase staff numbers with professionals
Staff numbers are inadequate for critical management activities	1				
Staff numbers are below optimum level for critical management activities	2	S1, S2,S3 S4			
Staff numbers are adequate for the management needs of the protected area	3				
14. Staff training  Are staff adequately trained to fulfil management	Staff lack the skills needed for protected area management	0	S1, S2,S3	S1, S2,S3: Staff members have some skills in forest management, but not SPNA management	S1, S2,S3 S4: Organize trainings for staff according to the needs of protected area
Staff training and skills are low relative to the needs of the protected area	1	S4			
Staff training and skills are adequate, but could be further improved to fully achieve the objectives of management	2				

Issue	Criteria	Score: Tick only one box per question		Comment/Explanation	Next steps
objectives? <i>Inputs/Process</i>	Staff training and skills are aligned with the management needs of the protected area	3			
15. Current budget  Is the current budget sufficient?  <i>Inputs</i>	There is no budget for management of the protected area	0		S1, S2,S3 S4: Only one source – state budget is inadequate, lack of financing	S1, S2,S3 S4:Develop fundraising plans for sustainable income generation and financing
	The available budget is inadequate for basic management needs and presents a serious constraint to the capacity to manage	1	S1, S2,S3 S4		
	The available budget is acceptable but could be further improved to fully achieve effective management	2			
	The available budget is sufficient and meets the full management needs of the protected area	3			
16. Security of budget  Is the budget secure?  <i>Inputs</i>	There is no secure budget for the protected area and management is wholly reliant on outside or highly variable funding	0		S1, S2,S3 S4: Budget secured by state	S1, S2,S3 S4: Create alternative financial sources
	There is very little secure budget and the protected area could not function adequately without outside funding	1			
	There is a reasonably secure core budget for regular operation of the protected area but many innovations and initiatives are reliant on outside funding	2	S1, S2,S3 S4		
	There is a secure budget for the protected area and its management needs	3			
17. Management of budget  Is the budget managed to meet critical	Budget management is very poor and significantly undermines effectiveness (e.g. late release of budget in financial year)	0		S1, S2,S3 S4: One source financing (State budget) covers only part of management needs	S1, S2,S3 S4: Involve donors and create mechanisms for improvement of incomes
	Budget management is poor and constrains effectiveness	1	S1, S2,S3 S4		
	Budget management is adequate but could be improved	2			



Issue	Criteria	Score: Tick only one box per question		Comment/Explanation	Next steps
programme linked to the objectives and needs?  <i>Process</i>	There is an appropriate and fully implemented education and awareness programme	3		trainings programme with education and awareness elements	
21. Planning for land and water use  Does land and water use planning recognise the protected area and aid the achievement of objectives? <i>Planning</i>	Adjacent land and water use planning does not take into account the needs of the protected area and activities/policies are detrimental to the survival of the area	0		S1, S2,S3 S4: Lack of link of forest management planning with natural resources integrated planning	S1, S2,S3 S4: Develop natural resources integrated planning options for PA management planning process
Adjacent land and water use planning does not takes into account the long term needs of the protected area, but activities are not detrimental the area	1				
Adjacent land and water use planning partially takes into account the long term needs of the protected area	2	S1, S2,S3 S4			
Adjacent land and water use planning fully takes into account the long term needs of the protected area	3				
<b>Additional points: Land and water planning</b>					
21a: Land and water planning for habitat conservation	Planning and management in the catchment or landscape containing the protected area incorporates provision for adequate environmental conditions (e.g. volume, quality and timing of water flow, air pollution levels etc) to sustain relevant habitats.	+1			
21b: Land and water planning for connectivity	Management of corridors linking the protected area provides for wildlife passage to key habitats outside the protected area (e.g. to allow migratory fish to travel between freshwater spawning sites and the sea, or to allow animal migration).	+1			

Issue	Criteria	Score: Tick only one box per question		Comment/Explanation	Next steps
21c: Land and water planning for ecosystem services & species conservation	"Planning addresses ecosystem-specific needs and/or the needs of particular species of concern at an ecosystem scale (e.g. volume, quality and timing of freshwater flow to sustain particular species, fire management to maintain savannah habitats etc.)"	+1			
22. State and commercial neighbours  Is there co-operation with adjacent land and water users? <i>Process</i>	There is no contact between managers and neighbouring official or corporate land and water users	0		S1, S2,S3 S4: The contact between managers and neighbours are only in framework of rights of different resource users	S1, S2,S3 S4: Create a mechanism for substantial cooperation
	There is contact between managers and neighbouring official or corporate land and water users but little or no cooperation	1			
	There is contact between managers and neighbouring official or corporate land and water users, but only some co-operation	2	S1, S2,S3 S4		
	There is regular contact between managers and neighbouring official or corporate land and water users, and substantial co-operation on management	3			
23. Indigenous people  Do indigenous and traditional peoples resident or regularly using the protected area have input to management decisions?  <i>Process</i>	Indigenous and traditional peoples have no input into decisions relating to the management of the protected area	0			
	Indigenous and traditional peoples have some input into discussions relating to management but no direct role in management	1			
	Indigenous and traditional peoples directly contribute to some relevant decisions relating to management but their involvement could be improved	2			
	Indigenous and traditional peoples directly participate in all relevant decisions relating to management, e.g. co-management	3			

Issue	Criteria	Score: Tick only one box per question		Comment/Explanation	Next steps
24. Local communities  Do local communities resident or near the protected area have input to management decisions?  <i>Process</i>	Local communities have no input into decisions relating to the management of the protected area	0		S1, S2,S3 S4: The legislation sets forth local communities participation in PAs management related issues, however, does not specify the mechanisms of local people involvement in law enforcement and decisions making process relating to the protected areas management	S1, S2,S3 S4: Review existing legislation on land, water and forest codes, as well as PA management
	Local communities have some input into discussions relating to management but no direct role in management	1	S1, S2,S3 S4		
	Local communities directly contribute to some relevant decisions relating to management but their involvement could be improved	2			
	Local communities directly participate in all relevant decisions relating to management, e.g. co-management	3			
<i>Additional points Local communities/indigenous people</i>					
24 a. Impact on communities	There is open communication and trust between local and/or indigenous people, stakeholders and protected area managers	+1			
24b. Impact on communities	Programmes to enhance community welfare, while conserving protected area resources, are being implemented	+1			
24c. Impact on communities	Local and/or indigenous people actively support the protected area	+1			
25. Economic benefit  Is the protected area providing	The protected area does not deliver any economic benefits to local communities	0		S4: Ecotourism development is a potential source of benefit to local communities	S1, S2,S3: Need to develop MP with support (or buffer) zone programmes and
	Potential economic benefits are recognised and plans to realise these are being developed	1	S4		
	There is some flow of economic benefits to local communities	2	S1, S2,S3		

Issue	Criteria	Score: Tick only one box per question		Comment/Explanation	Next steps
economic benefits to local communities, e.g. income, employment, payment for environmental services? <i>Outcomes</i>	There is a major flow of economic benefits to local communities from activities associated with the protected area	3		S1, S2,S3: Fuel wood and non wood products use are main forms for economic benefits for local communities	business plans
26. Monitoring and evaluation  Are management activities monitored against performance?  <i>Planning/Process</i>	There is no monitoring and evaluation in the protected area	0		S1, S2,S3 S4: There is monitoring of illegal logging and state environmental inspection	S1, S2,S3 S4: Develop internal monitoring systems for management and biodiversity
	There is some <i>ad hoc</i> monitoring and evaluation, but no overall strategy and/or no regular collection of results	1	S1, S2,S3 S4		
	There is an agreed and implemented monitoring and evaluation system but results do not feed back into management	2			
	A good monitoring and evaluation system exists, is well implemented and used in adaptive management	3			
27. Visitor facilities  Are visitor facilities adequate?  <i>Outputs</i>	There are no visitor facilities and services despite an identified need	0		S1, S2,S3:No infrastructure for ecotourism management  S4: Visitor facilities could be improved	S1, S2,S3 S4:Develop visitor programs and infrastructure
	Visitor facilities and services are inappropriate for current levels of visitation	1	S1, S2, S3		
	Visitor facilities and services are adequate for current levels of visitation but could be improved	2	S4		
	Visitor facilities and services are excellent for current levels of visitation	3			
28. Commercial tourism operators	There is little or no contact between managers and tourism operators using the protected area	0	S1, S2,S3 S4	S1, S2, S3, S4: Lack of visitor programmes.	S1, S2,S3 S4: Need to develop visitor

Issue	Criteria	Score: Tick only one box per question		Comment/Explanation	Next steps
Do commercial tour operators contribute to protected area management?  <i>Process</i>	There is contact between managers and tourism operators but this is largely confined to administrative or regulatory matters	1			programmes in MPs and cooperation mechanisms with tourism operators
	There is limited co-operation between managers and tourism operators to enhance visitor experiences and maintain protected area values	2			
	There is good co-operation between managers and tourism operators to enhance visitor experiences, and maintain protected area values	3			
29. Fees  If fees (i.e. entry fees or fines) are applied, do they help protected area management?  <i>Inputs/Process</i>	Although fees are theoretically applied, they are not collected	0	S1, S2,S3, S4:	S1, S2, S3, S4: No legally approved entrance fees.	S1, S2,S3, S4: Develop legal acts for PA entrance fees
	Fees are collected, but make no contribution to the protected area or its environs	1			
	Fees are collected, and make some contribution to the protected area and its environs	2			
	Fees are collected and make a substantial contribution to the protected area and its environs	3			
30. Condition of values  What is the condition of the important values of the protected area as compared to when it was first designated?  <i>Outcomes</i>	Many important biodiversity, ecological or cultural values are being severely degraded	0		S1, S2 S3:Degraded forests in the result of illegal logging	S1, S2 S3: Organize rehabilitation of forest ecosystems
	Some biodiversity, ecological or cultural values are being severely degraded	1	S1, S2 S3,		
	Some biodiversity, ecological and cultural values are being partially degraded but the most important values have not been significantly impacted	2			
	Biodiversity, ecological and cultural values are predominantly intact	3	S4		

Issue	Criteria	Score: Tick only one box per question		Comment/Explanation	Next steps
<i>Additional Points: Condition of values</i>					
30a: Condition of values	The assessment of the condition of values is based on research and/or monitoring	+1	S4		
30b: Condition of values	Specific management programmes are being implemented to address threats to biodiversity, ecological and cultural values	+1			
30c: Condition of values	Activities to maintain key biodiversity, ecological and cultural values are a routine part of park management	+1			
<b>TOTAL SCORE</b>			<b>S1, S2 S3: 31 S4: 47</b>		

## Questionnaire for Assessment of Management and Law Enforcement Effectiveness in Sanctuaries

### I. General Data

Name, Surname	
Position	
Organization	
Address	

1. Is your organization managing the State Sanctuary?

Yes	No

2. Is there an appointed staff in the forest enterprise responsible for the management? Mention the positions.

---



---



---



---

3. Which are the main protection objects of the Sanctuary?

---



---



---

4. How do you assess the condition/state of main protection objects?

Satisfactory	Endangered	Severely endangered	Difficult to say

5. Are the boundaries of Sanctuary clearly demarcated?

Yes	Partly	No	Difficult to say

6. Does the Sanctuary have management plan?

Yes	No	Difficult to say

7. Does the Sanctuary have Charter?

Yes	No	Difficult to say

8. Do you consider the management of the Sanctuary as effective?

Yes	Partly	No	Difficult to say

Explain, why.

---



---



---



---



---

**II. FUNCTIONS**

9. Please, list your functions in the sphere of management and law enforcement in the Sanctuary.

---



---



---



---

10. What are the law enforcement problems you face managing the Sanctuary?

---



---



---



---



---



---

11. Which specialists of the below listed would you need for the effective management of the Sanctuary?

Profession	Need			
	No need	Low	Average	Strong
Biologist				
Zoologist				
Ecologist				
Botanist				
Land specialist				
Forester				
Agronomist				
Hydrologist				
Tourism development specialist				

Profession	Need			
	No need	Low	Average	Strong
Tourism operator				
Computer operator				
Translator/ interpreter				
Lawyer				
Other (mention ).....				

### V. Information/ communication

12. What type of information are you missing for effective management of the Sanctuary?

Information	The quality of available information			Importance		
	low	average	high	low	average	high
Maps, sketches of Sanctuary						
Fauna monitoring data						
Flora monitoring data						
Forest monitoring data						
Water resources monitoring data						
Land state monitoring data						
Legal data						
SNPA international experience						
Results of surveys						
Other (please, mention ).....						

### V. Use

13. What are the main types of use in the Sanctuary?

Activity	Level of influence		
	low	average	high
Land cultivation			
Timber harvesting			
Harvesting of non wood forest products			
Grazing			
Cattle husbandry			
Construction			
Mining			
Use of water resources			
Non-regulated tourism			
Other (please, mention ).....			

14. Which methods would you propose to improve the mitigation of non-regulated utilization activities and law enforcement?

Activity	Importance		
	low	average	high
Strict administration			
Development of Charter			
Preparation of management plan for the Sanctuary			
Nature use regulation, development of legal acts			
Awareness raising			
Ecotourism development			
Involvement of key stakeholders			
Clarification of staff competences			
Other (please, mention ).....			

**VI. Proposals**

18. What would you propose in order to improve the management effectiveness?

Activity	Importance		
	low	average	high
Area clarification, demarcation			
Staff recruitment			
Technical refurbishment			
Trainings			
Other .....			

Additional information/ comments not included in the current questionnaire.

---



---



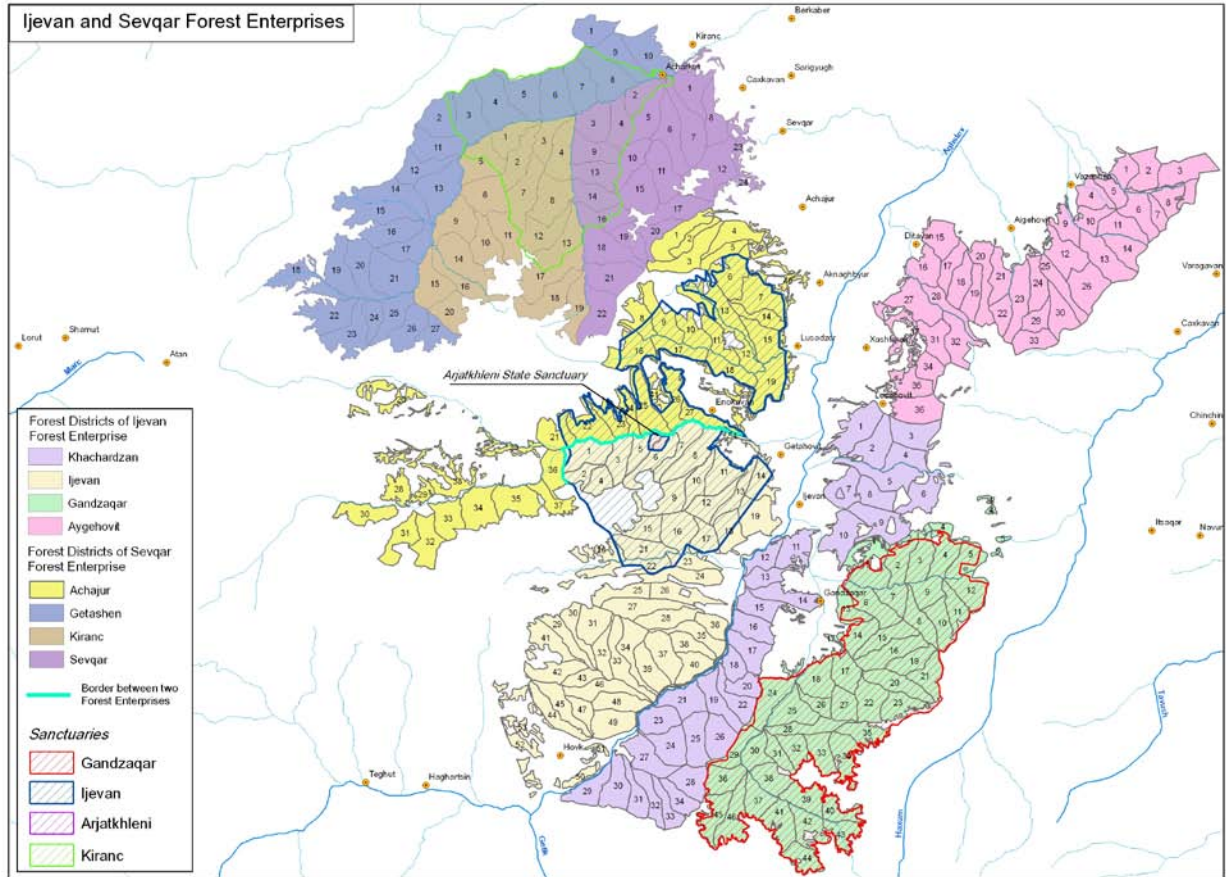
---

*List of respondents*

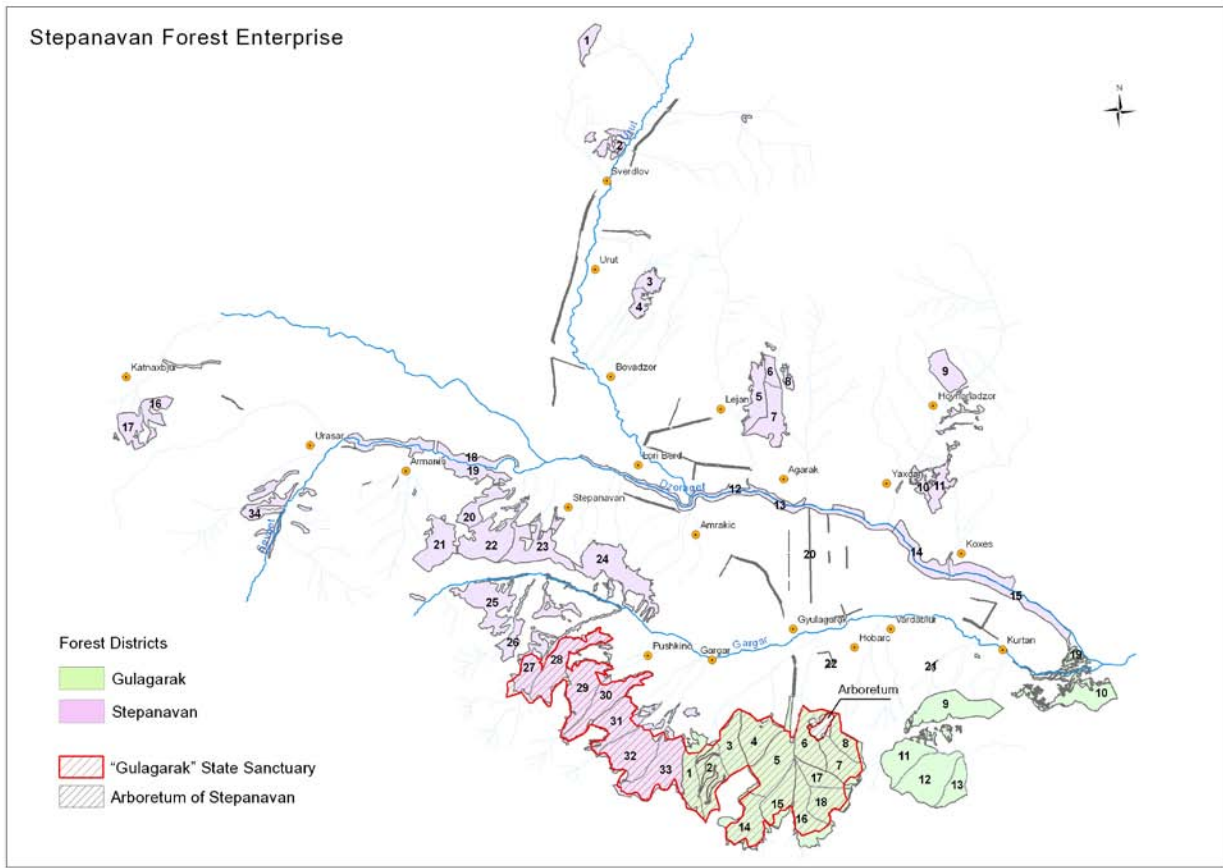
Protected area	Name	Position
<b>“Ijevan’ and “Arjatkhlendi Hazelnut” State Sanctuaries</b>	Ruben Petrosyan	“Hayantar” SNCO, Chief Forester
	Artsrun Ghaltakhchyan	Head of “Ijevan” Forest Enterprise
	Vardan Arustamyan	Chief forester
<b>“Gyulagarak Pine” State Sanctuary</b>	Arsen Mikoyan	Head of “Stepanavan” Forest Enterprise
	Ruben Manukyan	Head of nursery
	Avetiq Galstyan	Maintenance engineer
	Colak Nazaryan	Chief forester
<b>“Zikatar” State Sanctuary</b>	Andranik Ghulijanyan	Head of “Forest Research Experimental Centre” SNCO
	Seyran Azatyan	Forest management planning specialist
	Suren Amirzyan	Maintenance engineer

MAPS

Map 1. Boundaries of “Ijevan” and “Arjatkhlenti Hazelnut” State Sanctuaries



**Map 2. Boundaries of “Gyulagarak Pine” State Sanctuary**



## BIBLIOGRAPHY

1. State Strategy on Developing Specially Protected Nature Areas and National Action Plan of Armenia, RA Ministry of Nature Protection, Yerevan 2003
2. A. Gevorgyan, A. Aghasyan. Current State of the Specially Protected Nature Areas of the Republic of Armenia. Yerevan, 2008
3. National Forest Program of the Republic of Armenia, 2005
4. Law of the Republic of Armenia on the Specially Protected Nature Areas, 2006
5. Law of the Republic of Armenia on Fauna, 2000
6. Law of the Republic of Armenia on Flora , 1999
7. Law of the Republic of Armenia on Tourism and Tourist Activities, 2003
8. RA Governmental Decree N 198-N dated 25.01.2007 on the State Forest Monitoring
9. RA Governmental Decree N 1236, dated 2002 on the Establishment of Bioresources Management Agency in the Structure of the RA Ministry of Nature Protection
10. Forest Management Plan of “Ijevan” Forest Enterprise, 2006
11. Forest Management Plan of “Sevqar” Forest Enterprise, 2006
12. Forest Management Plan of “Stepanavan” Forest Enterprise, 2010
13. Forest Management Plan of “Noyemberyan” Forest Enterprise, 2010
14. Reserves of Caucasus (ed. Sokolov V.E., Siroechkovsky E. E.). Moscow. “Misl”.

**PHOTOS**

**Meetings in Tavush and Lori Marzes**



*“Zikatar” State Sanctuary*



*“Gulagarak Pine” State Sanctuary*

